

ESSS 2020 KAL/CAL Blanket – July Squares

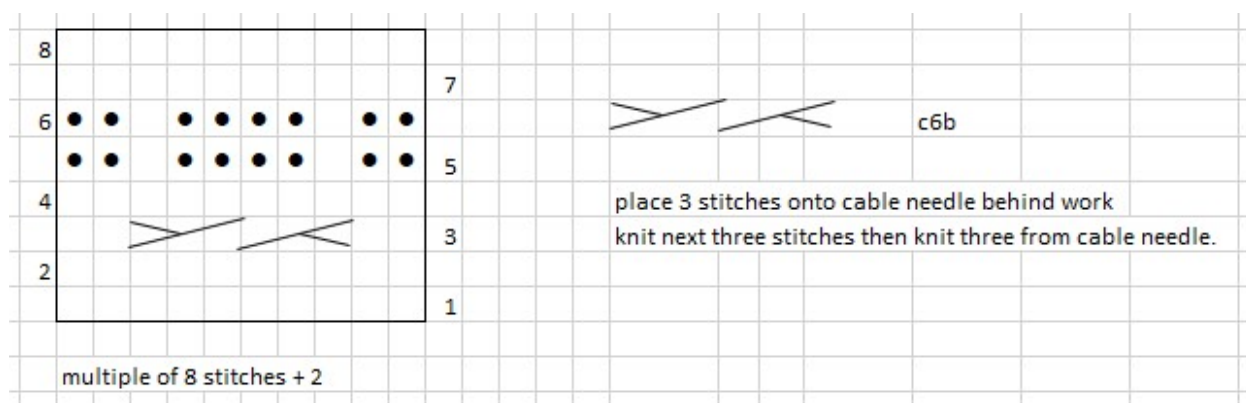
All sizes given are based on the following (please adjust for gauge accordingly)

Yarn	Worsted Weight
Gauge	Knit - approx. 20 sts on US 8 = 4" Crochet - 14 sts on I or K hook = 4"
Completed Size of square	12" x 12"

Knit – Basic – Woven Cable

NOTE - Suggest first 6-10 rows are worked straight garter stitch, and a couple of stitches each end of every row are worked as knit stitches to reduce curl but this is optional and are not included in this pattern description.

Cast on 66 sts (8*8 + 2 sts for pattern repeat)



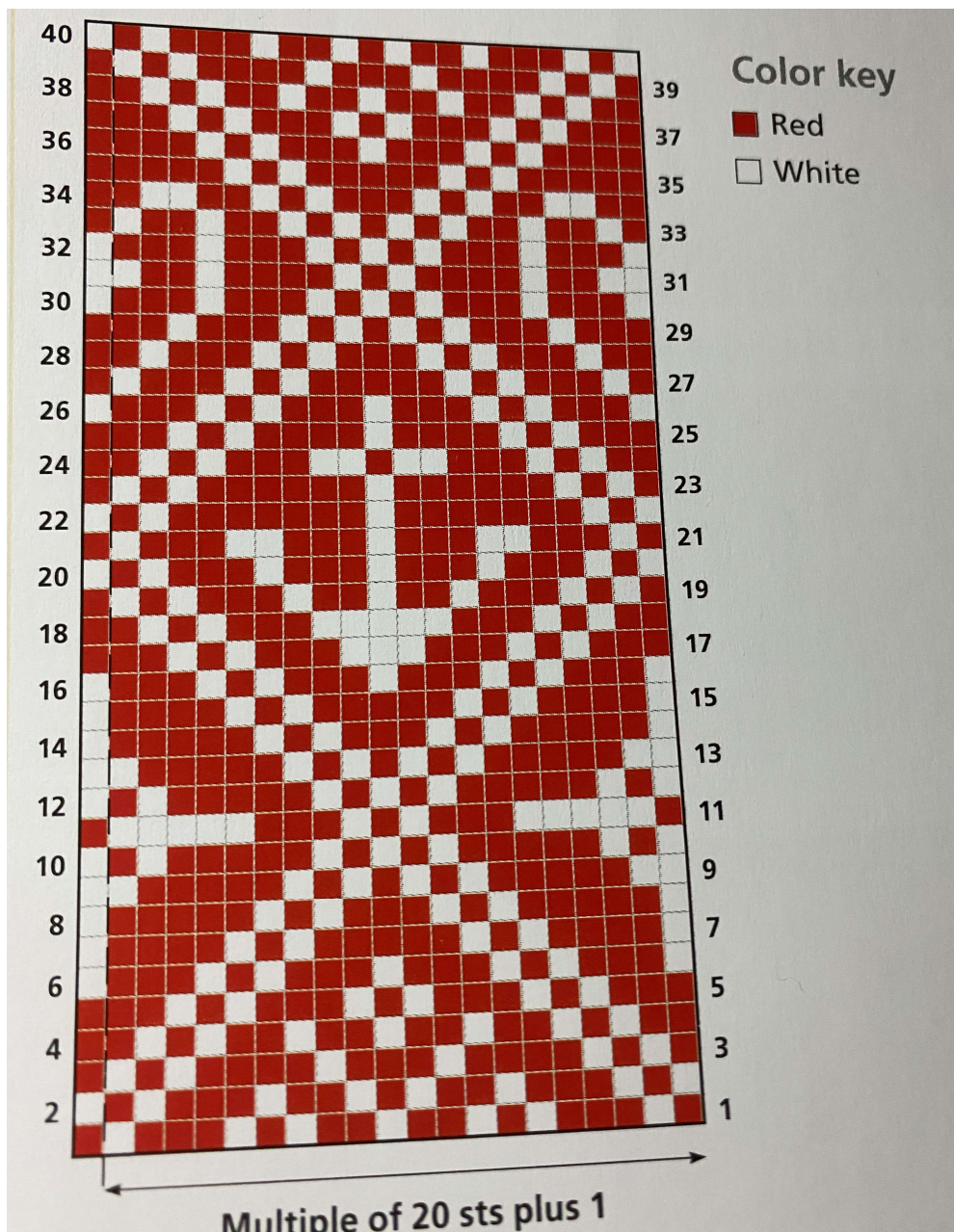
Pattern stitch from Essential Stitch collection page 52

Knit – Advanced – Faith Hope and Charity

(2 color)

Pattern Chart is on the next page,

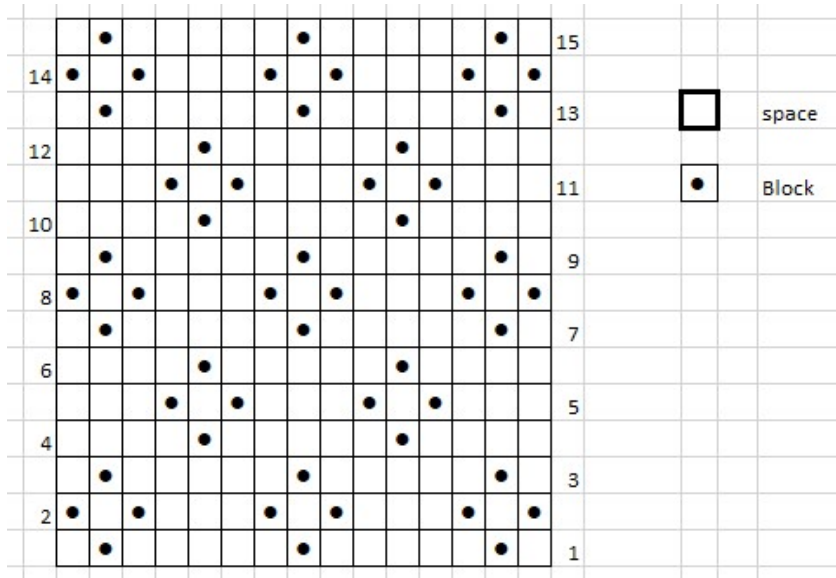
Cast on 61 stitches and work through design in two colors (they dont have to be red and white you can chose any 2 contrasting colors)..



Pattern stitch from Essential Stitch collection page 151

Crochet – Basic – Filet Crochet

Filet crochet is a square crochet technique and is often shown in Chart form without written instructions. Generally Filet crochet is worked in Double Crochet stitches and the basic “block” consists of a starting double, two chains (or two doubles) and an ending double which is also the starting double of the next block. The foundation chains to start the square are not always shown so chain at least a multiple of 3+1 like 46 chains



Crochet – Advanced – Granny Square Variation

Find a Filet square pattern with bars and lacets, example pattern below

